

Vine & Orchard Insurance Cover

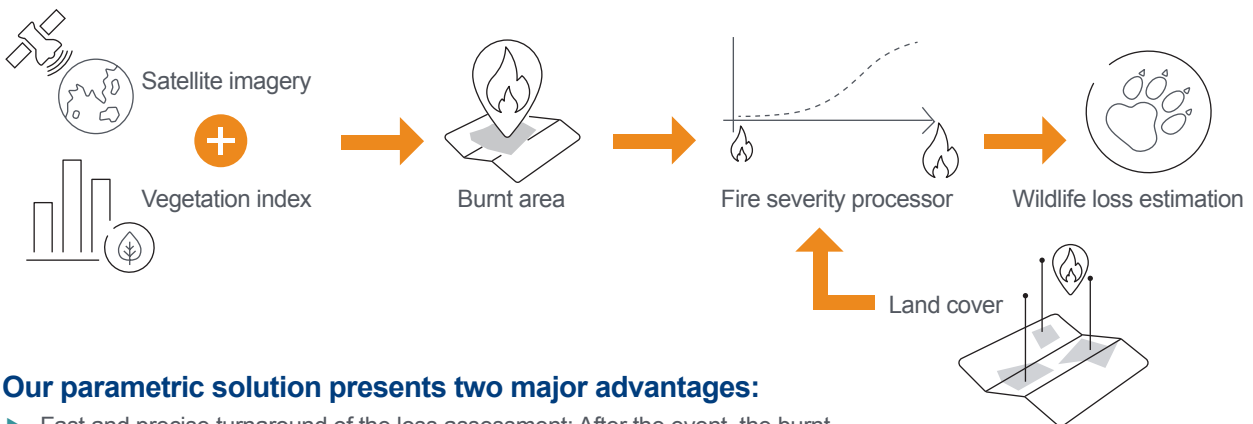
We use modern satellite technologies and in-situ vineyard and orchard data to review historical bushfire losses and provide our clients with tailored and accurate parametric cover. Some of the data we analyse includes vineyard and orchard age, along with the location of each block.

How does it work?

Bushfire presents a major peril for vineyards and orchards. Liberty Specialty Markets is developing innovative solutions using new technologies, combined with machine learning algorithms and various data sources, to cover bushfire risks. We monitor fire risk by satellite imagery delivered by NASA Landsat, which provides us with a 30-metre resolution. Our processing technique enables us to develop an index that reflects the burnt surface post event.

Once the smoke has dispersed we process images before and after the event to calculate the damaged areas. We calculate the financial losses based on the burnt area values defined at a pre-agreed and precise scale.

Our parametric cover can also be complemented by a traditional policy to offer protection against other perils not measurable by remote-sensing.



Our parametric solution presents two major advantages:

- ▶ Fast and precise turnaround of the loss assessment: After the event, the burnt area and the corresponding losses are estimated without any human intervention.
- ▶ In addition to determining the fire zone, our algorithm is able to estimate the fire severity to measure the vineyard or orchard salvage with a very fine granularity over the area.

Our solution

Moderate Resolution Imaging Spectroradiometre (MODIS) data delivers earth observation data with a large grid pattern of up to 500 metres.

Our solution is based on Landsat technologies which, at a 30-metre resolution, enables us to generate an accurate and robust estimation of fire damage.

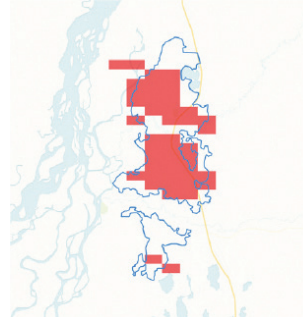
While MODIS provides binary information (burnt/unburnt), our solution based on Landsat produces a continuous severity index of the burnt area. This index allows us to fit a salvage policy and account at a thin scale the parameters of your property (value, age and type of trees and vines, etc).



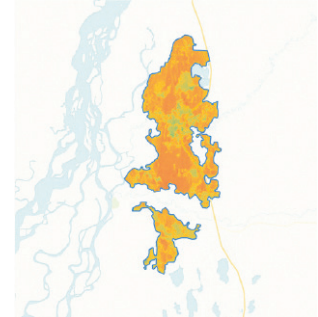
Pre-fire infrared picture



Post-fire infrared picture



MODIS burnt area



Landsat-Liberty burnt area

Our specialist underwriters, supported by an experienced team of actuaries, claims and administration professionals, provide a high quality of service.

We write agriculture and parametric covers on a worldwide basis, all backed by 'A' rated security.

Information we require:

- ▶ Vineyard or orchard information:



Location



Area (including shape file)



Age



Species

- ▶ Historical losses

Global reach. Financial strength. Local authority.

Distinct, complex and constantly evolving – every business is as unique as their insurance needs. To confidently progress in the face of risk and uncertainty requires a level of security you can only achieve through working with specialists.

Liberty Specialty Markets offers a breadth of world-class insurance and reinsurance services to brokers and insured clients. We bring value and solutions to more than 26,000 of Asia Pacific's most significant business and government organisations – helping protect what they earn, build and own.

We're part of the global Liberty Mutual Group, a Fortune 100 company that's been in business since 1912 with a Standard and Poor's 'A' rating.

[View our office locations](#)

[Meet our Weather team members](#)



Connect and join the Liberty conversation

Liberty is not authorised to provide financial product advice. The information in this document does not take into account your objectives, financial situation or needs. Always consider the applicable policy wording and other relevant documents before deciding to acquire a financial product. This information is current as at July 2024. Liberty means Liberty Specialty Markets, a trading name of Liberty Mutual Insurance Company, Australia Branch (ABN 61 086 083 605; AFSL No. 530842 (for claims handling and settling services only)) incorporated in Massachusetts, USA (the liability of members is limited); Liberty Specialty Markets Hong Kong Limited (UBI 66395065); Liberty Specialty Markets Singapore Pte Limited (UEN 201538069C); and Liberty Specialty Markets Singapore Pte Limited, Labuan Branch (Company No. LF12903), a licensed insurer under the Labuan Financial Services and Securities Act 2010 (Licence No. IS2016162).