



# Product Recall



DUAL provides insurance for companies in the event that they need to withdraw a product from the marketplace – be it toys or electronics, clothing or cars.

Leaner supply chains, more complex products and greater global distribution have all contributed to frequent defects, resulting in complicated withdrawals and disruptions.

Our tailor-made policies are designed to help prepare for and survive such events – to protect your clients' product, brand, business reputation and bottom line.

## Risk appetite

**We work with manufacturers, wholesalers, retailers, importers and distributors of:**

- Transportation (automotive, aviation, rail, aerospace, etc.)
- Electronics (consumer, industrial)
- Communications equipment
- Brown and white goods
- Sporting and recreational equipment
- Toys
- Clothing apparel and footwear
- Furniture
- Packaging manufacturers

## Key features

- Worldwide coverage
- 24/7 access to a crisis hotline
- Pre-incident consulting services
- Primary and excess capacity
- Dedicated claims management
- Capacity provided by Lloyd's of London, led by Munich Re syndicate

## Coverage

### Discovery of:

- Defect
- Error in design
- Epidemic failure

### Pharmaceutical inclusions:

- Crisis consultancy costs
- Recall costs
- Replacement costs
- Forensic accounting costs
- Investigation costs
- Extra expenses
- Defense costs

## Additional coverage

- Third-party recall liability
- Impaired property
- Loss of gross profits and rehabilitation costs
- Workplace violence
- Malicious product tampering
- Additional endorsements available on request



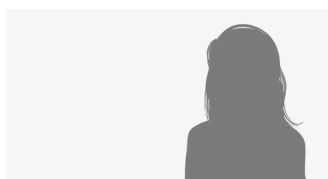
## Get in touch

---



### Robley Moor

Managing Director  
+44 (0)7342 723 422  
robley.moor@dualgroup.com



### Vanessa Fouquet

Senior Underwriter  
+44 (0)7521 776 005  
vanessa.fouquet@dualgroup.com

## Helping you do more

One Creechurch Place, London EC3A 5AF

+44 (0)20 7623 3806  
enquiries@dualgroup.com

**dualinsurance.com**

DUAL Corporate Risks Limited is authorised and regulated by the Financial Conduct Authority under firm reference number 312593.  
DUAL Corporate Risks Limited is registered in England and Wales No. 4160680, with its registered offices at: One Creechurch Place, London EC3A 5AF.